

Orion Energy Systems

E Series Enclosed Fixtures

Orion's patented lighting systems incorporate superior optical and thermal efficiency to deliver the most output with the least input.

APPLICATIONS Ideal in dusty interior environments.

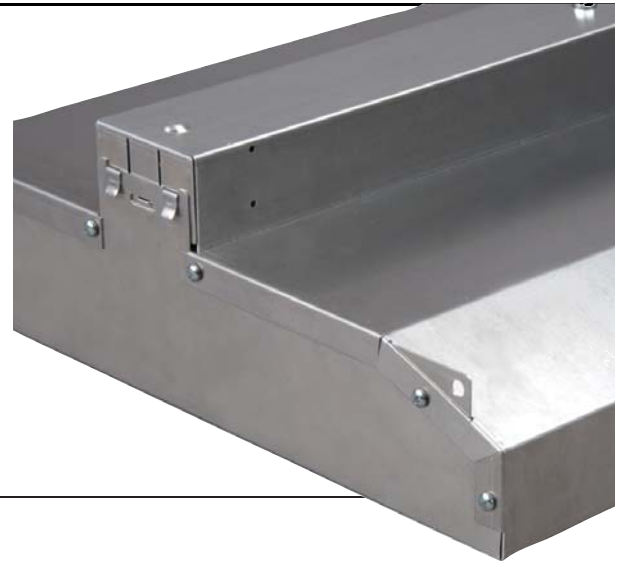
CERTIFICATION UL Listed. UL Damp rated.

CONSTRUCTION Durable aluminum body. Toolless access ballast pack. >90% fixture efficiency.

FINISH Mill finish, with black powder coat on power pack.

ELECTRICAL Prewired. Instant and programmed start ballasts available for T8 lamps. Programmed start ballasts available for T5 lamps.

REFLECTOR Patented, optically efficient reflector design provides 95% total reflectance.



SPECIFICATIONS

Series	Lamps	Wattage Consumed ¹	Commonly Replaces ²	Length	Width	Depth
EP/E	4 T8 Lamps	145 @ 277v	250w HID Lamp	48.50"	12.25"	5.75"
EP/E	6 T8 Lamps	218 @ 277v	400w HID Lamp	48.50"	17.50"	5.75"
EP/E	8 T8 Lamps	290 @ 277v	450w HID Lamp	48.50"	22.75"	5.75"
EP/E	4 T5 Lamps	226 @ 277v	400w HID Lamp	48.50"	12.25"	5.75"
EP/E	6 T5 Lamps	340 @ 277v	750w HID Lamp	48.50"	17.50"	5.75"
EP/E	8 T5 Lamps	452 @ 277v	850w HID Lamp	48.50"	22.75"	5.75"
EP/E	10 T5 Lamps	566 @ 277v	1000w HID Lamp	48.50"	28.00"	5.75"

Notes:

¹347v and 480v options increase wattage consumed.

²"Commonly replaces" information is only a guide. Consider environmental conditions and customer requirements in your energy savings design.

ORDERING INFORMATION

EP/E	XX	XX	XX	XX	XX	XX	XX	XX	XX
Series	Number of Lamps	Reflector Options 1	Power Connection	Ballast Type	Power Source	Transformer	Ballast Output	Reflector Options 2	Lamp Type
EP	Enclosed Fixture with Platform Connection	HB Ultra High Bay (T8 only)	(blank) Full Switching HW Hardwire	(blank) Full Switching DS Dual Switching DO Dual Option	(blank) Full Switching DS Dual Switching DO Dual Option	(blank) High Bay LB Low Bay (T8 only)	(blank) Full Switching DS Dual Switching DO Dual Option	(blank) High Bay LB Low Bay (T8 only)	(blank) Full Switching DS Dual Switching DO Dual Option
E	Enclosed Fixture with Mate-N-Lok Connection	HB Ultra High Bay (T8 only)	(blank) Full Switching HW Hardwire	(blank) Full Switching DS Dual Switching DO Dual Option	(blank) Full Switching DS Dual Switching DO Dual Option	(blank) High Bay LB Low Bay (T8 only)	(blank) Full Switching DS Dual Switching DO Dual Option	(blank) High Bay LB Low Bay (T8 only)	(blank) Full Switching DS Dual Switching DO Dual Option
Number of Lamps		Ballast Type		Transformer		Lamp Type			
4	4-Lamp T8	T8 Ballast		(blank) No Internal Transformer TF Internal Transformer, 480v		T8 Lamps			
6	6-Lamp T8	T5 Ballast¹				(blank) High (1.15 BF) NX Normal Plus* (1.00 BF) N Normal* (0.87 BF) LP Low* (0.77 BF)			
8	8-Lamp T8	(blank) UNV Instant Start	(blank) UNV Programmed Start			T5 Lamps			
4T5	4-Lamp T5	PS UNV Programmed Start	347 347v Programmed Start*			(blank) Normal (1.00 BF)			
6T5	6-Lamp T5	PI 1 UNV Programmed Start, 1 UNV Instant Start	480 480v Programmed Start*						
8T5	8-Lamp T5	0 UNV Osram	BB Battery Backup						
10T5	10-Lamp T5	277 277v Instant Start*	*Ballast may be from Osram or Universal						
		347 347v Instant Start*	¹ T5 Ballasts are Programmed Start only						
		BB Battery Back-up							
		PSFD Programmed Start Full Dimming							

*Add "HL" to Lamp Type prefix for High Lumen. Add "SR" to Lamp Type prefix for Shatter Resistant. Add "HLSR" to Lamp Type prefix for High Lumen Shatter Resistant.

*Not available with T8 347v Instant Start ballast



800-660-9340

www.oesx.com

NYSE Amex: OESX

©2012 Orion Energy Systems, Inc. All rights reserved. Light Years Ahead and Orion are trademarks/service marks of Orion Energy Systems Inc. Design modification rights reserved. Orion fixtures are covered by a one-year limited warranty. Accessories and individual components are covered by separate OEM supplier warranties.



09/14/2012